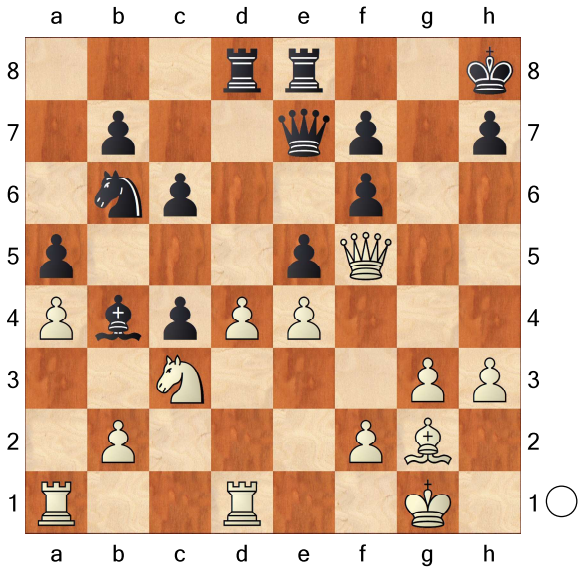


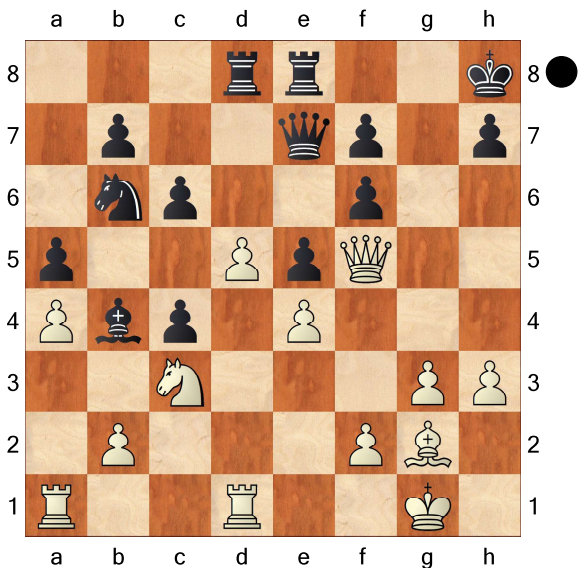
Lacambra,Gem
 Botta,Massimiliano
 Didoni 2023
[Botta,Massimiliano]

D11
 30.Re1 Qe5 31.Qc7 fxf3+ 32.Kh1
 Qf6 33.fxf3 Rxf3 34.Rf1 Qxh4+
 35.Kg1 Rxf2+
0-1

21.04.2023



21.d5

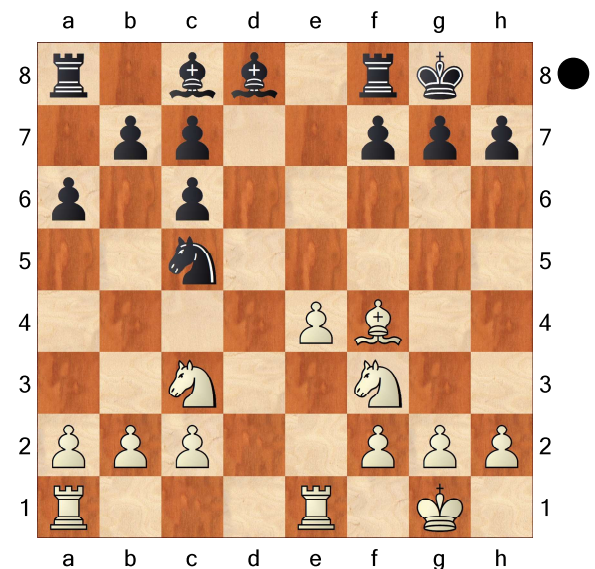


Nc8!!

[21...cxd5?? 22.exd5]
22.h4 Bxc3 23.bxc3 cxd5 24.exd5
 [24.Rxd5 Rxd5 25.exd5]
24...Nd6 25.Qb1 e4 26.Qb6 f5
27.Qxa5 f4 28.Qc5 Rg8
 [28...Qf6 29.Qd4]
29.Kh2 Rg7
 [29...fxg3+ 30.fxf3 Rxf3 31.Kxf3
 Nf5+]

C85

Bondarevsky,Igor Tsakharovich
 Smyslov,Vassily V
 Moscow-ch25 Final (8) 04.02.1946
[Botta,Massimiliano]

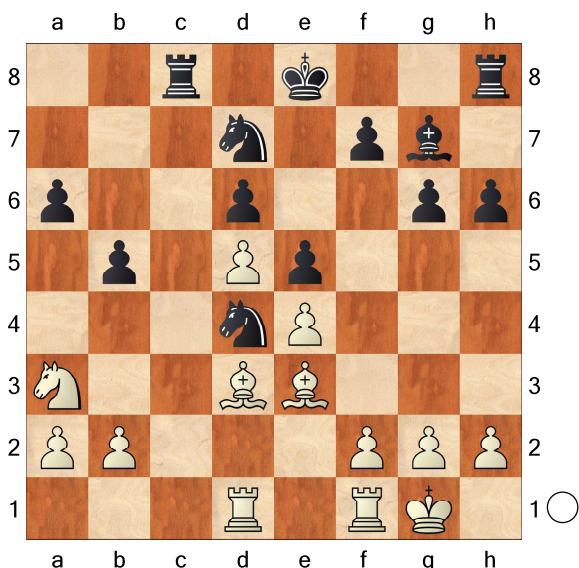


12...f5! inviting the passed pawn 13.e5
 Ne6 14.Bd2 g5 15.Ne2 c5 16.Bc3 b5
 17.b3 Bb7 18.Ng3 g4 19.Nd2 Be7
 20.Nh5 Kf7 21.Nf1 Kg6 22.Nf6 Rad8
 23.Rad1 Rxd1 24.Rxd1 Rd8 25.Rxd8
 Bxd8 26.Ne3 f4 27.Nd1 Bxf6 28.exf6
 Be4 29.Bb2 b4 30.f3 Bxc2 31.Nf2
 gxf3 32.gxf3 Bb1 33.Ne4 Bxa2
 34.Nd2 a5 35.Kf2 Nd4 36.Bxd4 cxd4
 37.Ke2 Kxf6 38.Kd3 Ke5 39.Kc2 a4
 40.bxa4 c5 41.a5 c4 42.a6 d3+
0-1

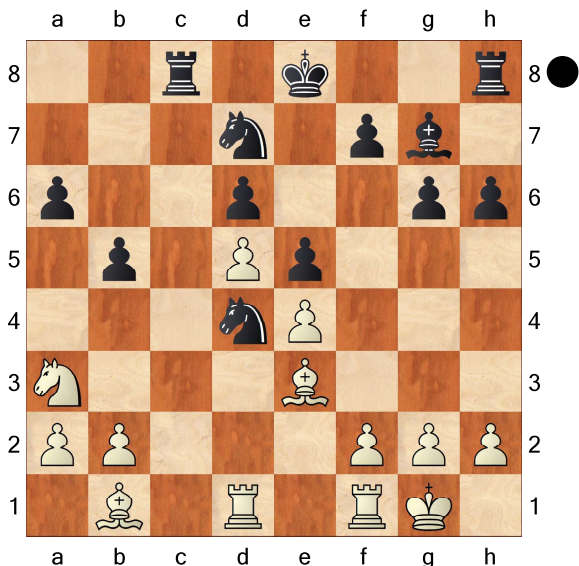
Paravyan,David
 Maghsoodloo,Parham
 Chess.com Rapid Wk5 Swiss (6) 12.3.22
[Botta,Massimiliano]

B32
2617
2701

Rc8 47.Re7+ Kxd5 48.Ke3 Rc3+
49.Kf4 Rxb3 50.Kxg4 Rd3 51.Rb7 b3
52.Kxh3 Kc4 53.Kg4 Rd5 54.h4 Rb5
55.Rc7+ Kd3 56.Rc1 b2 57.Rb1 Kc2
58.Rh1 d5 59.h5 d4 60.h6 d3 61.h7
Rb8 62.Kf5 b1Q
0-1



18.Bb1



g5!! 19.Bxd4 exd4 20.Nc2 Rc4 21.b3
Rc3 22.Nxd4 Bxd4 23.Rxd4 Ke7
24.Rd2 Rhc8 25.Rfd1 Ne5 26.Kf1 h5
27.Bd3 h4 28.Be2 Kf6 29.Ke1 g4
30.Rb2 h3 31.g3 Nf3+ 32.Bxf3 Rxf3
33.Rdd2 Ke5 34.Rdc2 Rfc3 35.Re2
b4 36.Kd2 Kd4 37.Re1 f6 38.Ra1
Re8 39.Ke2 Kxe4 40.Rd2 Rec8
41.a3 a5 42.axb4 axb4 43.Ra6 Ke5
44.Ra7 Re8 45.Rd3 Rxd3 46.Kxd3

C55

Botta,Massimiliano
 Liloni,Francesco
 Spilibergo 2023 01.10.2023
[Botta,Massimiliano]

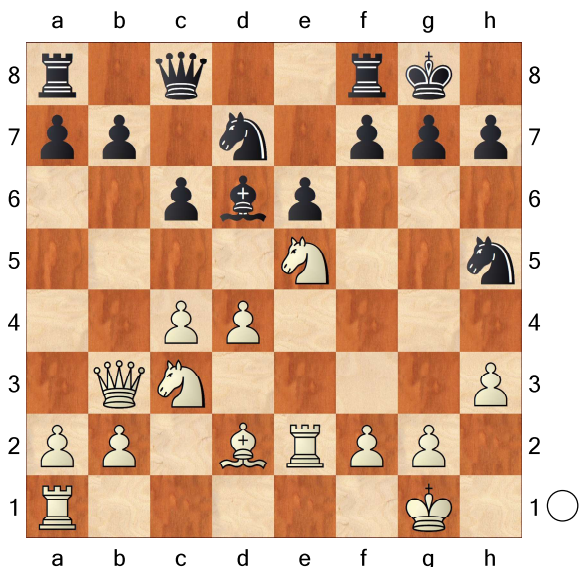
1.e4 e5 2.Nf3 Nc6 3.Bc4 Nf6 4.d3
h6 5.0-0 d6 6.a4 g5 7.a5 Bg7 8.a6
b6 9.Bb5 Bd7 10.c4 0-0 11.Nc3 Nh7
12.Be3 Nd4 13.Bxd7 Qxd7 14.Bxd4
exd4 15.Ne2 c5 16.Ng3 Rfe8 17.Nf5
Nf8 18.h4 Ne6 19.g3 Kh7 20.hxg5
Rg8
[20...Nxc5 21.Nxc5+ hxg5]
21.Kg2 hxg5
[21...Bf8 22.Rh1 Rg6 23.Qd2 Re8
24.Rh5 Bg7 25.Rah1]
22.Nxc5+
1-0

B01

Hector,Johnny
 Nielsen,Jens-Ove Fries
 Ballerup 01.04.2012
[Botta,Massimiliano]

1.e4 d5 2.exd5 Qxd5 3.Nf3
[3.Nc3]
3...Nf6 4.d4 Bg4 5.Be2 e6 6.0-0
Be7 7.h3 Bh5 8.c4 Qd8
[8...Qa5]
9.Qb3 Qc8 10.Nc3 0-0 11.Bf4 Nbd7
12.Rfe1 Bd6 13.Ne5 Bxe2
[13...Nxe5 14.dxe5]
[13...Bxe5 14.dxe5 Bxe2 15.exf6]
14.Rxe2 Nh5 15.Bd2 c6

B32



16.Ne4 Be7

[16...Bxe5 17.dxe5 Nxe5 18.Nd6 (18.g4 Nf6 19.Nxf6+ gxf6 20.f4 Ng6 21.Qc3) 18...Qc7 19.Rxe5 Qxd6 20.Rxh5 Qxd2 21.Qxb7 Rab8 22.Qxc6 Rxb2 23.Qe4 g6 24.Rb5 Qxf2+ 25.Kh1 Rxa2]

17.Bb4!

[17.c5]
17...Bxb4 18.Qxb4 Nhf6 19.Nd6 Qc7 20.Rd1 a5 21.Qa3 Nb6 22.Rd3

[22.Qg3]
22...Nc8 23.c5 Nd5 [23...Nxd6 24.cxd6 Qd8 25.Rg3→] 24.Rb3 Ra7 25.Rg3 Nce7 26.Qf3 Ng6 27.h4! Raa8

[27...Nxb4 28.Qg4 Ng6 29.Nxg6 hxg6 30.Qh4]

28.h5 Nxe5 29.Rxe5 Qe7 30.Reg5 g6 31.hxg6 fxg6 32.Rxg6+ hxg6

33.Rxg6+ Kh7 [33...Kh8 34.Qh5+ Qh7 35.Rh6 Qxh6 36.Qxh6+ Kg8 37.Qg6+ Kh8 38.Nf7+ Rxf7 39.Qxf7]

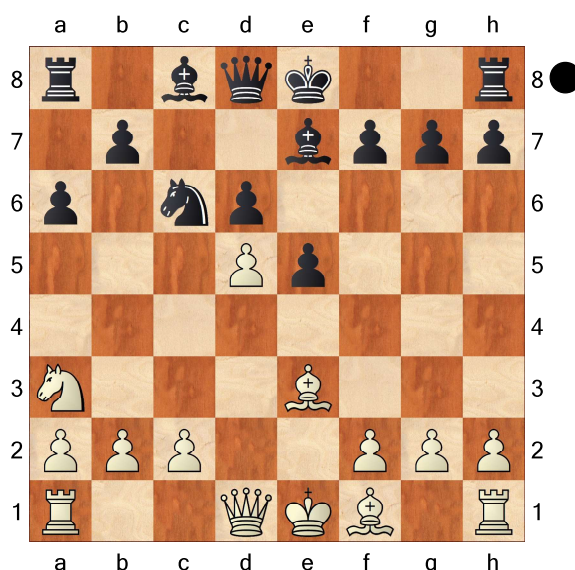
34.Qh5#

1-0

□ De Nardi
■ Botta

Rated Rapid game blitz 01.10.2023
[Botta,Massimiliano]

1.e4 c5 2.Nf3 Nc6 3.d4 cxd4
4.Nxd4 e5 5.Nb5 d6 6.N1c3 a6
7.Na3 Be7 8.Be3 Nf6 9.Nd5 Nxd5
10.exd5



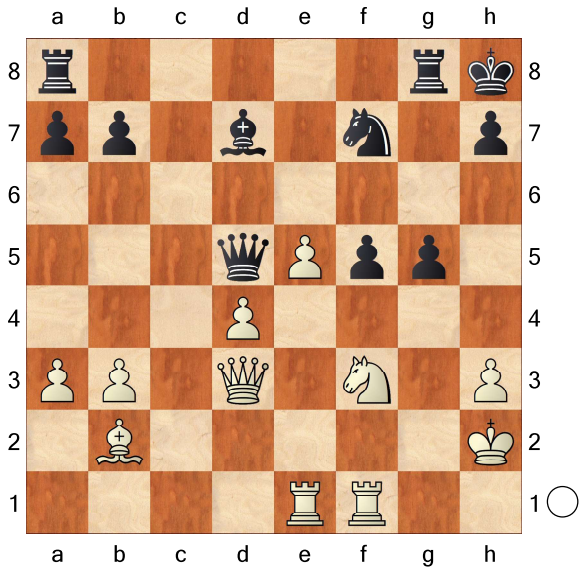
Nd4! 11.Bxd4 exd4 12.Qxd4 0-0
13.0-0-0

[13.Be2 Bf6 14.Qb4 Re8]
13...Bf6 14.Qa4 Bd7 15.Qb3 b5
16.Bd3 Rb8 17.Rhe1 Qb6 18.f3
Rfc8 19.Nb1 a5 20.Nd2 b4 21.Be4
a4 22.Qe3 b3 23.Qxb6 bxa2
24.Qxd6 Bxb2#
0-1

D05

□ Capablanca,Jose Raul
■ Corzo y Prinzipe,Juan
Match Capablanca-Corzo +4-3=6 (11)
[Botta,Massimiliano]

(Diagram)



28.e6!!

[28.Rg1 Be6-+]

28...Bb5

[28...Bxe6 29.Rxe6! Qxe6 30.d5+]

29.Qxb5!! Qxb5 30.d5+ Rg7 31.exf7 h6

[31...Rf8 32.Nxg5+-]

32.Nd4+- Qxf1 33.Rxf1 Rxf7 34.Rxf5 Rxf5 35.Nxf5+ Kh7 36.Ne7 Rf8 37.Kg2 h5 38.d6 g4 39.hxg4 hxg4 40.Be5 Kh6 41.d7 Rd8 42.Ng8+ Rxc8 43.Bf6 Kg6 44.d8Q Rxd8 45.Bxd8

1-0

D40

□ Rotlewi, Georg A

■ Rubinstein, Akiba

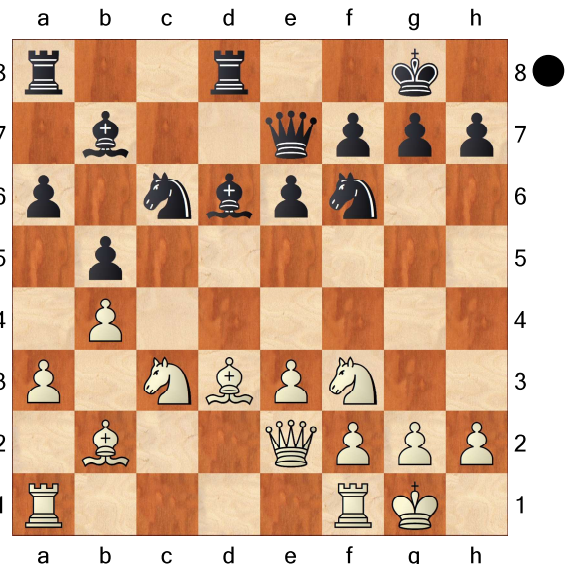
Lodz1

26.12.1907

[Knaak, Rainer]

Rotlewi (Jahrgang 1889, aber schon 1920 verstorben) hat durch diese Partie zweifelhaften Ruhm erlangt; dabei war er so schlecht nicht: Beim Turnier in Karlsbad 1911 kam er nur einen Punkt hinter Rubinstein ein; er schlug ihn zudem im direkten Aufeinandertreffen und sorgte so dafür, daß der große Akiba nur 2. wurde (hinter Teichmann). Nach 1911 gibt es

keine Partien mehr von ihm. 1.d4 d5 2.Nf3 e6 3.e3 c5 4.c4 Nc6 5.Nc3 Nf6 6.dxc5 Bxc5 7.a3 a6 8.b4 Bd6 9.Bb2 0-0 Das klassische Dilemma: Weiß möchte nicht Le2 oder Ld3 spielen, denn nach dxc4 muß der Läufer ein zweites Mal ziehen. Schlägt der Anziehende selbst auf d5, so wird nach e6xd5 der Lc8 befreit. Doch die Erfahrung eines Jahrhunderts besagt, daß 10.cxd5 exd5 11.Le2 einen hauchdünnen Vorteil verschafft. 10.Qd2? Wenn schon ein Damenzug, dann doch 10.Dc2. 10...Qe7! 11.Bd3? dxc4 12.Bxc4 b5 13.Bd3 Rd8 14.Qe2 Bb7 15.0-0 Durch die beiden Fehler von Weiß hat Schwarz gewissermaßen den Anzugsvorteil an sich gerissen; zudem hat er mit ♖d8 ein weiteres Tempo gewonnen. Trotzdem ist es verblüffend, daß Weiß in einer fast komplett symmetrischen Stellung praktisch ohne weiteren Fehler untergeht.



15...Ne5! 16.Nxe5 Bxe5 17.f4 Bc7 18.e4 Rac8 19.e5?! Danach ist Weiß endgültig verloren. 19...Bb6+ 20.Kh1 Ng4! 21.Be4

[21.Qxg4 Rxd3-+]

21...Qh4 22.g3

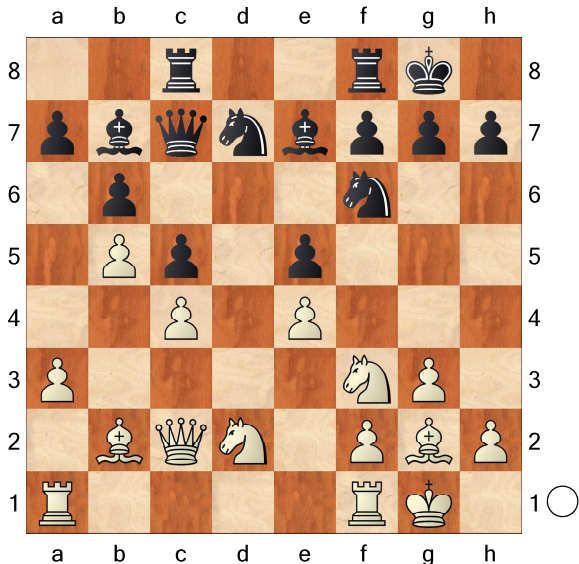
[Nach 22.h3 Rxc3! (droht 23... Txxh3+) gibt es zwei Varianten:

☐ Silman
 ■ TEST 4

HTRYC

08.10.2025

[Botta,Massimiliano]

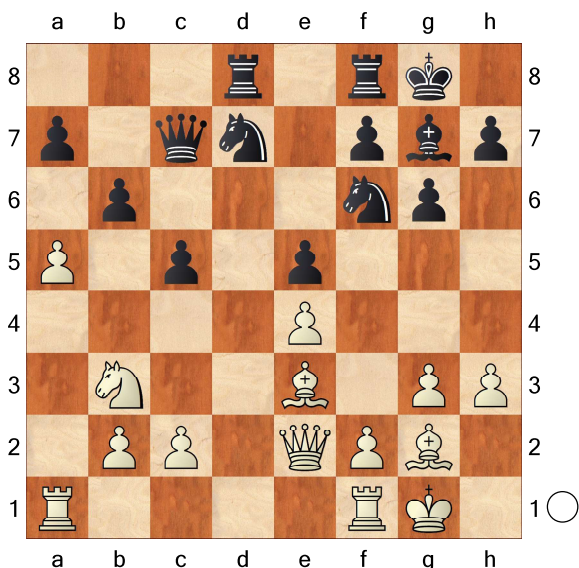


1.Nh4! g6 2.Bh3!
 1-0

A07

☐ Fischer,Robert James
 ■ Ibrahimoglu,Ismet

TEST 5: Olympiad-19 Preliminaries C (6)
 [Botta,Massimiliano]

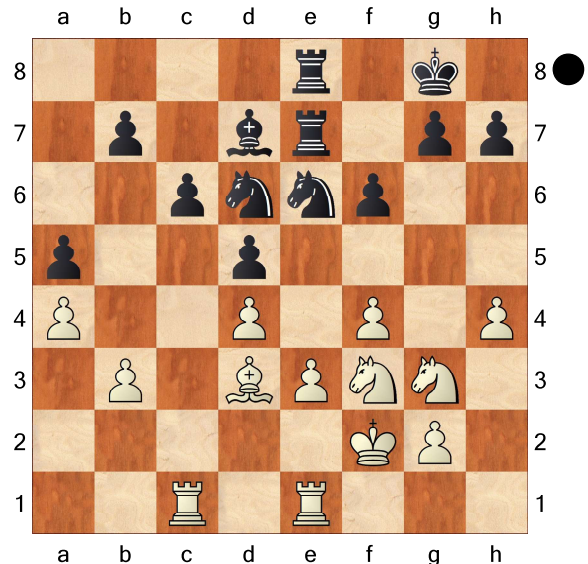


16.Nd2! Ne8 17.axb6 axb6 18.Nb1!

Qb7 19.Nc3 Nc7 20.Nb5 Qc6
 21.Nxc7 Qxc7 22.Qb5 Ra8 23.c3
 Rxa1 24.Rxa1 Rb8 25.Ra6 Bf8
 26.Bf1 Kg7 27.Qa4 Rb7 28.Bb5 Nb8
 29.Ra8 Bd6 30.Qd1 Nc6 31.Qd2 h5
 32.Bh6+ Kh7 33.Bg5 Rb8 34.Rxb8
 Nxb8 35.Bf6 Nc6 36.Qd5 Na7 37.Be8
 Kg8 38.Bxf7+ Qxf7 39.Qxd6
 1-0

Example 06

[GM Ioannis Papaioannou]



Black to move - how should he continue? 1...Nd8!! Intending ... Nf7-Nh6-Ng4 or -Nf5! This manoeuvre takes for moves, but at least one of them is coming with tempo! 2.Rc5

[2.Nd2 N8f7 3.e4 dxe4 4.Ngxe4 Nf5]

[2.b4? axb4 3.Rb1 N8f7 4.Rxb4 Nh6]

2...b6 3.Rc2 N8f7 4.Ree2 Nh6!
 Hellsten

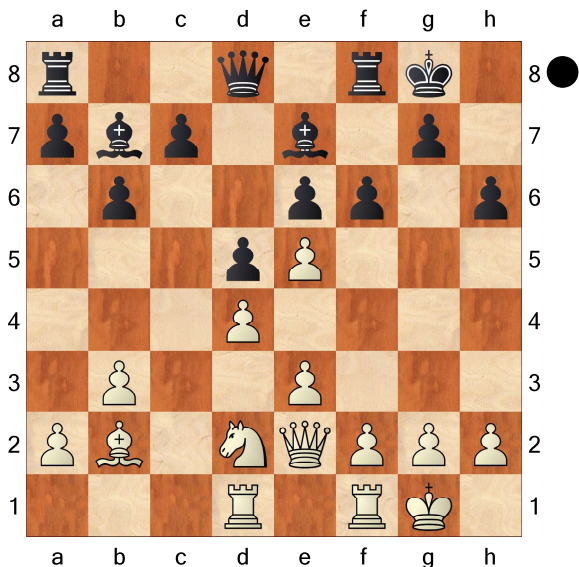
□ blitz game

■ Botta

minor piece strategy

19.06.2026

[Botta,Massimiliano]



1...a5!

[1...fxe5 2.dxe5 c5 (2...Qe8!)
3.Ne4 a5 4.Qg4→ (4.f4!?)]

2.f4 Ba6 3.Qg4 Qd7!

[3...f5 4.Qg6∞]

[3...Bxf1 4.Qxe6+ Kh8 5.Rxf1 fxe5
6.dxe5! c5 7.Nf3 a4 8.f5 axb3 9.f6
gxf6 10.Nh4+-]

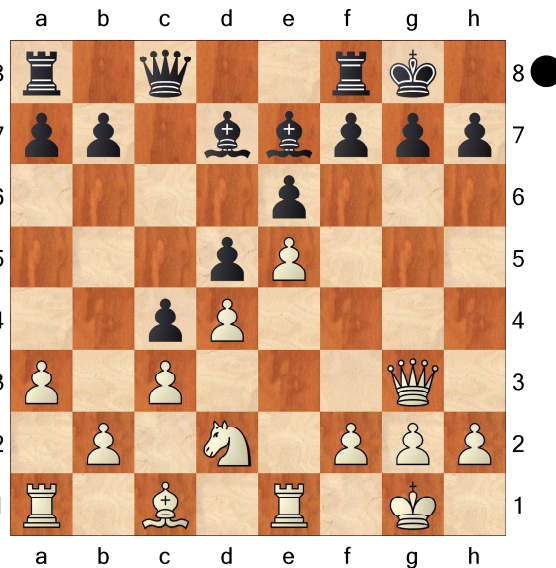
4.Rf2 Bd3

0-1

Example 11

[GM Ioannis Papaioannou]

(Diagram)



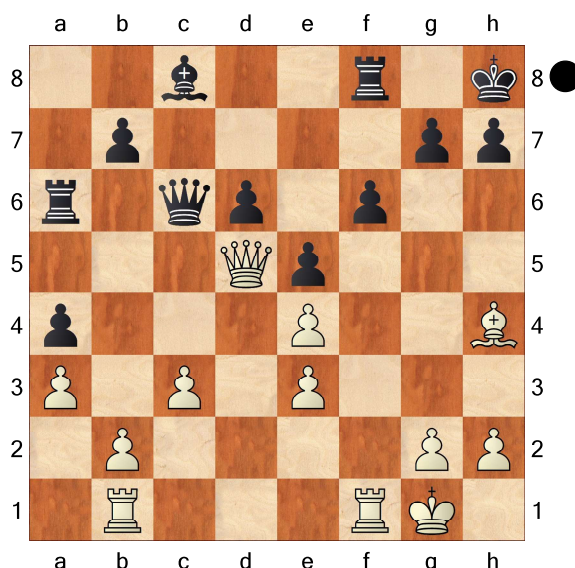
Black to move White appears to be better as he threatens to play Nf3 followed by Bh6. 1...Ba4!!

[1...f6? Solves one problem, but creates another. 2.exf6 Rxf6 3.Nf3±]

2.Nf3 Bc2 The bishop has found a nice diagonal. White no longer threatens anything on the kingside while ...b5, ...a5, and ... b4 is about to follow.

Example 09

[GM Ioannis Papaioannou]

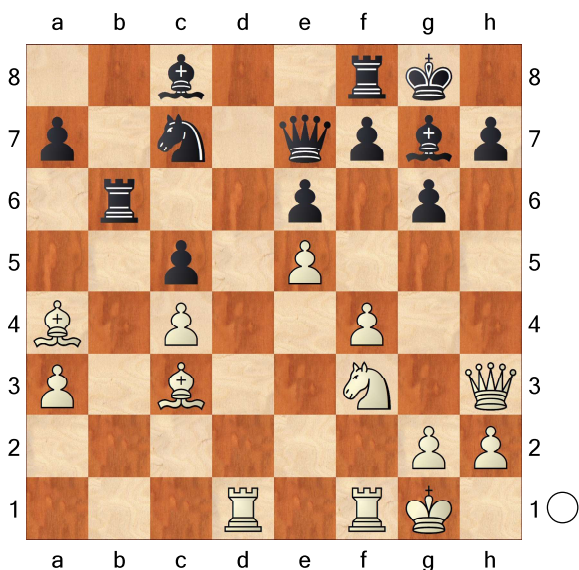


Black to play 3...Bg4!! Black realized that White's real weakness is on e4 -

so he manoeuvres his bishop to g6!
4.Rf2 Bh5! 5.Rd2 Bg6 Black soon
wins the e4-pawn - similar to a game
Mastrovasilis,D-Godena,M.

B09
2278
2248
Botta,Massimiliano
Cruz,Favio
Barcelona Christmas IM (3.1) 27.12.25
[YottaBase]

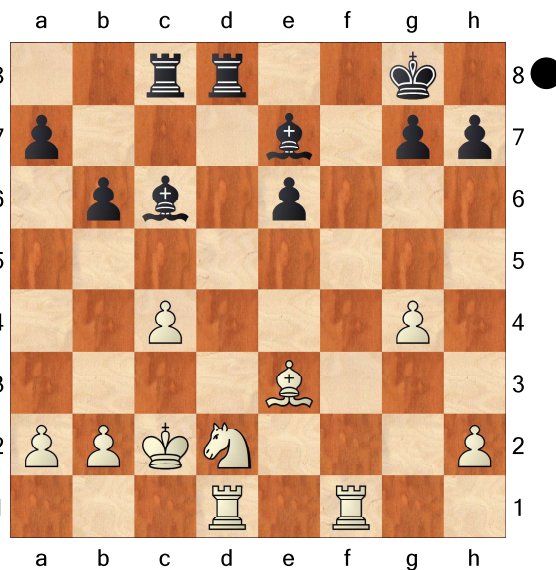
1.e4 d6 2.d4 Nf6 3.Nc3 c6 4.f4 g6
5.Nf3 Bg7 6.Be3 0-0 7.Bd3 b5 8.a3
Nbd7 9.e5 Ne8 10.0-0 Nb6 11.Qe1
Nc7 12.Qh4 Ncd5 13.Nxd5 Nxd5
14.Bd2 e6 15.Qh3 c5 16.dxc5 dxc5
17.Bxb5 Rb8 18.c4 Nc7 19.Ba4 Rxb2
20.Bc3 Rb6 21.Rad1 Qe7



22.Ng5! h6 23.Ne4 Ra6 24.Nf6+ Kh8
25.Bc2 Ne8 26.a4! Nxf6 27.exf6 Bxf6
28.Qxh6+ Kg8 29.Be5! Rb6 30.Rd3
1-0

Klimov
Fominyh
San Pietroburgo 2002 19.06.2026
[Botta,Massimiliano]

(Diagram)

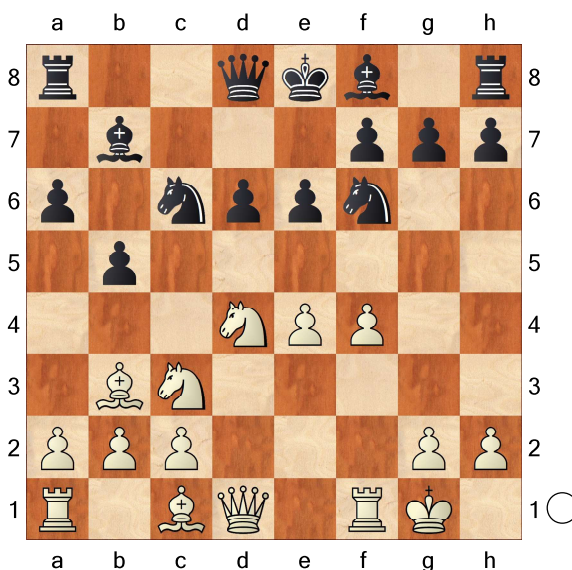


1...Be8! 2.b3 Bg6+ 3.Kb2 Bf6+ 4.Ka3
Bd3 5.Rfe1 Bc3 6.c5 bxc5 7.Bf4 Bc2

B87

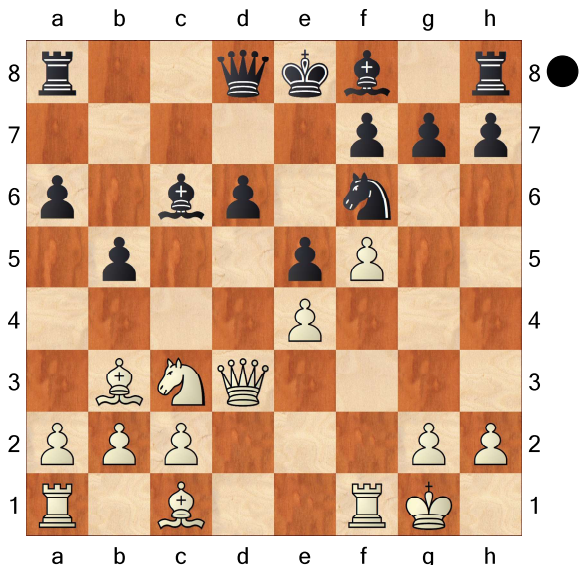
Fischer,Robert James
Gadia,Olicio
Mar del Plata International-23 (3)
[Botta,Massimiliano]

1.e4 c5 2.Nf3 d6 3.d4 cxd4 4.Nxd4
Nf6 5.Nc3 a6 6.Bc4 e6 7.Bb3 b5
8.0-0 Bb7 9.f4 Nc6?



10.Nxc6 Bxc6 11.f5 e5 12.Qd3?

(Diagram)

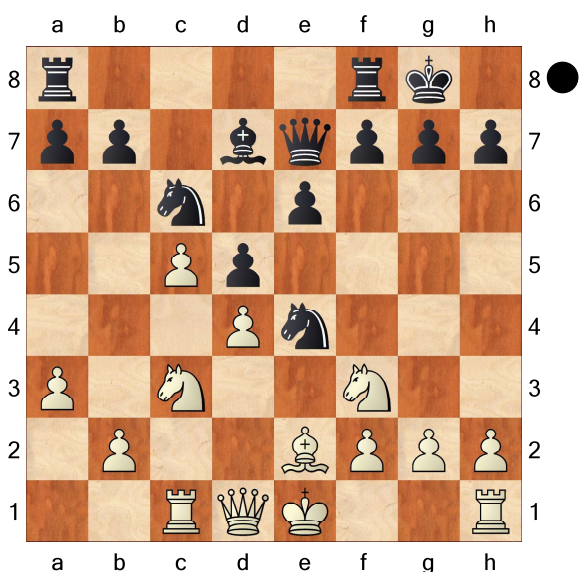


Be7? 13.Bg5! Qb6+ 14.Kh1 0-0
 15.Bxf6 Bxf6 16.Bd5! Rac8 17.Bxc6
 Rxc6 18.Rad1 Rfc8 19.Nd5 Qd8
 20.c3 Be7 21.Ra1 f6 22.a4 Rb8
 23.Nxe7+
1-0

□ Botvinnik, Mikhail
 ■ Konstantinopolsky, A
 Sverdlovsk (3)
[Botta, Massimiliano]

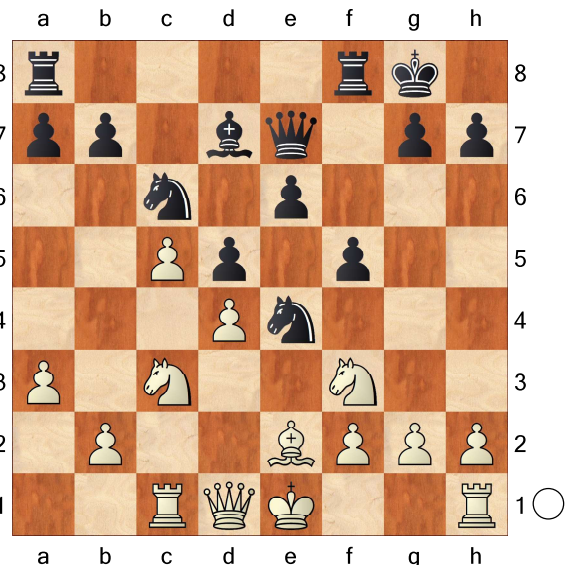
B14

1943



12...f5

(Diagram)



Black just destroyed his dark squares,
 how to proceed? **13.Bb5!** eliminate the
 defender! **13...Ng5!** eliminate the
 attacker!

[13...Nb8!/?]

14.Bxc6

[14.Nxg5!? Qxg5 15.0-0

was to be preferred, with the idea

a6? 16.Bxc6 Bxc6 17.f4!

fixing the structure Qf6 18.Re1 b6

19.b4 Rfb8 20.Re5!/?+-]

14...Nxf3+ 15.Qxf3 bxc6 16.Qf4!

the dark squares stay weak **16...Rae8**

17.0-0 e5!⇒ but black equalized

18.Qxe5 Qxe5 19.dxe5 Rxe5 20.f4

Re7 21.Rfe1 Rfe8 22.Rxe7 Rxe7

23.Kf2 Kf7 24.Rd1 Re8 25.Rd2 h6

26.Re2 Rb8 27.Ke3 Rb3 28.Kd4 Kf6

29.Na2 Rb8 30.b4 g5 31.g3 gxf4

32.gxf4 a6 33.Nc3 Rg8 34.a4 Rg4

35.Rf2 Be6 36.b5 axb5 37.axb5

cxb5 38.Nxb5 Rg1 39.Nc3 Kf7

40.Rb2 Rf1 41.Ne2 Re1 42.Ke5 d4

43.Kxd4 Kg6 44.Nc3 Kh5 45.Re2

Rxe2 46.Nxe2 Kg4 47.Ke5 Bc8

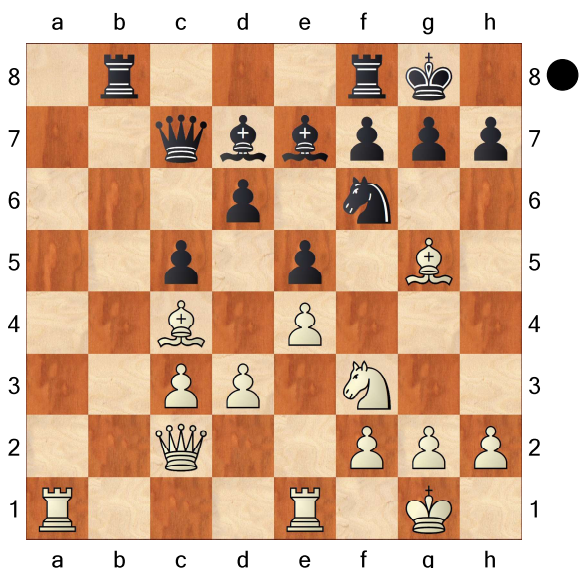
48.Nd4 h5 49.Nxf5 Bd7 50.Ng7 Ba4

51.f5 Kg5 52.Ne6+

1-0

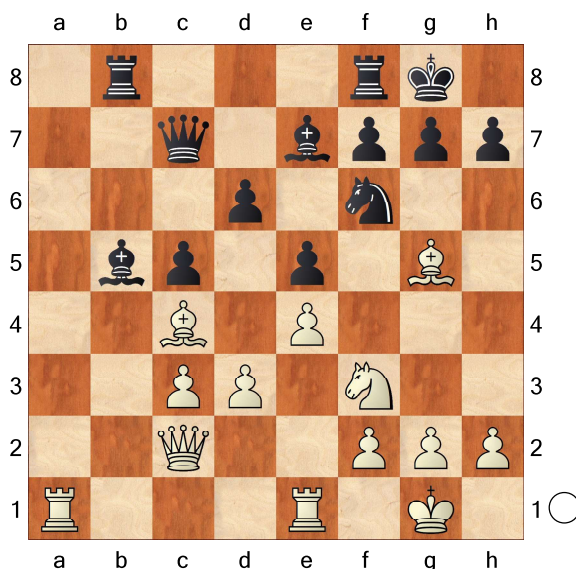
Carlsen, Magnus
 Tari, Aryan
 Norway Chess 8th (8) 13.10.2020
[Nielsen, Peter Heine]

C84
2863
2633



Winning this game was essential. Not only due to having the white pieces vs. the tournaments lowest rated player, but also in order to regain the lead in the tournament. Kasparov in his day would crush the lower-rated with his opening knowledge, not even allowing them to get a game, but these days the situation has reversed, and from the strongest player's perspective it is more a matter of actually getting out of the opening with a position full of play that becomes the target. Many would try along the lines of 1.♘f3/2.g3, keeping as many pieces on the board as possible, but the World Champion, as always, goes his own way: 18...Bb5?! dubious strategical decision

(Diagram)



19.Bxb5! Rxb5 20.Bxf6! Bxf6 21.Nd2

A very interesting position, at least from a technical point of view. Black has managed to clear off 3 sets of minor pieces, as well as the a- and b-pawns. All this speaks in favour of a draw, but White does have a very visible plus in the sense that his knight will settle on c4 or d5. That in itself is not enough to make Black's position collapse, so a lot is going to depend on how White can improve his position, intensifying the pressure. This position perhaps is not Black's last chance, but still a very crucial one. 21...Qc6?!

[Had Tari played 21...h5! , he would have seriously improved his chances of making a draw. Getting the pawn to h4 holds a lot of benefits. His bishop will have a safe haven on g5, and White's king will feel some discomfort should he allow a black rook access to the first rank.]

22.Qa4 Rfb8 23.Nc4

Another instructive moment. 23...Be7

[23...Bg5 suggests itself, stopping the knight from going on to e3 heading for d5, but 24.Na3 R5b6 25.Qxc6 Rxc6 26.Nc4

the computers indicate as basically winning for White! Despite the symmetry Black has been rendered

completely passive. White's rook will enter a7, then perhaps d7 and ♖a1-a7 coming next, Black is in a hopeless situation.]

[23...h5 was a more active way of defending but apart from 24.♘a3, White also has 24.g3 h4 25.Rab1!? as after Rxb1 26.Qxc6 Rxe1+ 27.Kg2 despite nominally being behind in material, White's queen and knight coordinate much better than the black pieces and should win easily.]

24.g3! 24.♘a3 certainly also was good, but with e7 protected, Black will be in time for ...♖c7 defending the 7th rank, and thus Magnus decides to reinforce his position even further. 24...Qc8 25.Qd1 g6 26.Kg2 Bf8 27.Qf3 Rb3 28.Rec1 Qe6 29.Ra7 Black's problem is not so much that his position in any way is collapsing, but that he has absolutely no way of trying to equalise. Often slightly worse positions have a tendency to turn into equality with exact moves, as the initiative evaporates, but here Magnus' advantage is purely static, and in a way that Black cannot repair. He'll just have to sit and wait, and try to parry White's attempts at breaking through. 29...R8b7 30.Rxb7!? A remarkable decision. In general one would think keeping material on the board favours the attacker, but as with the potential queen swap earlier, it is not necessarily so. White also has to break through, and eliminating a defender thus has definite plusses. 30...Rxb7 31.Ra1 h5 32.Ra8 Kg7 33.Ne3 Rc7? An innocent looking move, but the decisive mistake.

[The computer indicates that 33...Qd7! is the only way to defend, answering 34.Nd5 with Be7 defending the f6 square, when Black

stays in the game, with 35...♖a7 coming next. Objectively perhaps the position is drawn, but from a practical point of view, Tari would still have to suffer for many moves as White would play for h3-g3, d4 or even taking his king to the queenside.]

[33...Be7 looks similar, but then 34.Nf5+! wins, illustrating the pressure Black is under.]

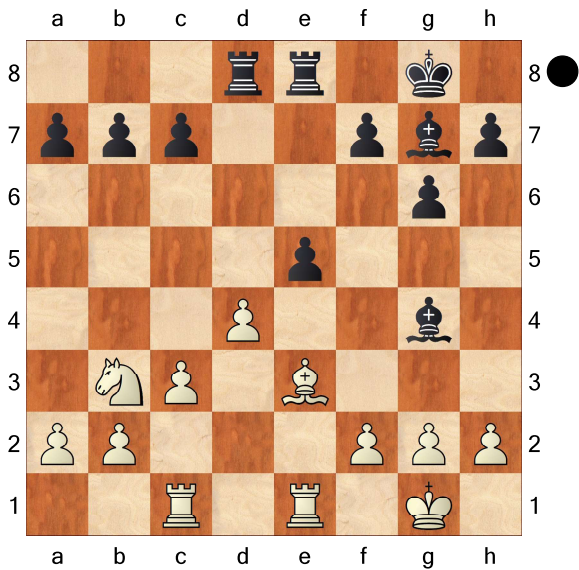
34.Nd5 Rc8 If 34...Rd7 White wins exactly like in the game, preparing g4-g5. 35.Ra7 Rb8 36.h3 Rd8 37.g4 hxg4 38.hxg4 Rd7 39.Ra8 f6 40.g5! The final finesse, as Black can not take on g5, due to f8 hanging. 40...f5 41.Qh3 Rf7 42.Re8!? Nice, and winning, yet the computers suggestion of 42 c4!? being even better is noteworthy! It illustrates the story of the game, the inability of the black position to improve itself, even given time for free. 42...Qxe8 43.Qh6+ Kg8 44.Qxg6+ Kh8 45.Nf6 And having to choose between mate or substantial material losses, Tari resigned.
1-0

□ Bishop pair

■ Steinitz (modified)

[GM Ioannis Papaioannou]

(Diagram)



19...exd4!

[19...e4 20.Bf4 c6 21.Nc5]
20.Bxd4 Bh6 21.Ra1 b6 22.h3 Be6
23.Be3 Bg7 24.Red1

[24.Bd4 f6!]
24...c5 25.Bg5 f6 again the Bishop is only temporarily shut. We can easily improve it from f8/h6 or by ...f5 in the future. **26.Bf4 Kf7 27.f3 g5!!** gaining more space. The main idea is h6 and then f5. **28.Rxd8 Rxd8 29.Be3 h6 30.Re1**

[30.h4 gxh4 It is always good to collect a pawn if your opponent can't get it easily. **31.Bf2 a5** planning a4-Rd2. (31...h3 is also possible. **32.g4 Rd3** with many threats on the board.) **32.Bxh4 a4 33.Nc1 Rd2** with compensation.]

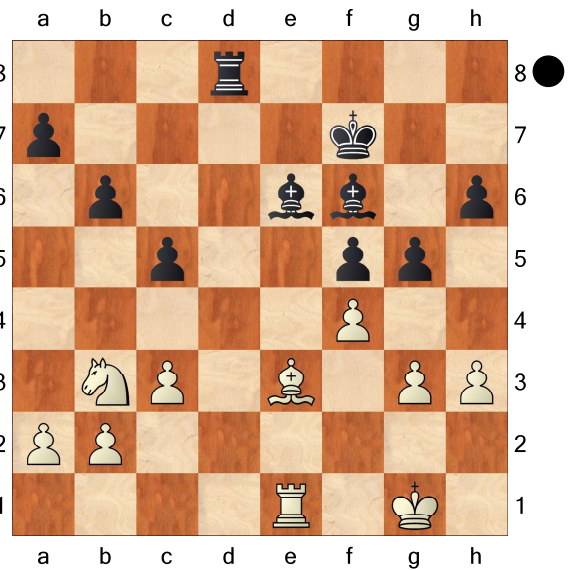
[30.f4 g4 ...a5 is also possible. **31.hxg4 Bxg4** The e3-Bishop is closed, We have a very good square of our Bishop on f5. Don't worry about our dark squared Bishop it can be improved with h5-Bh6 or Bf8.]

30...f5! 31.f4

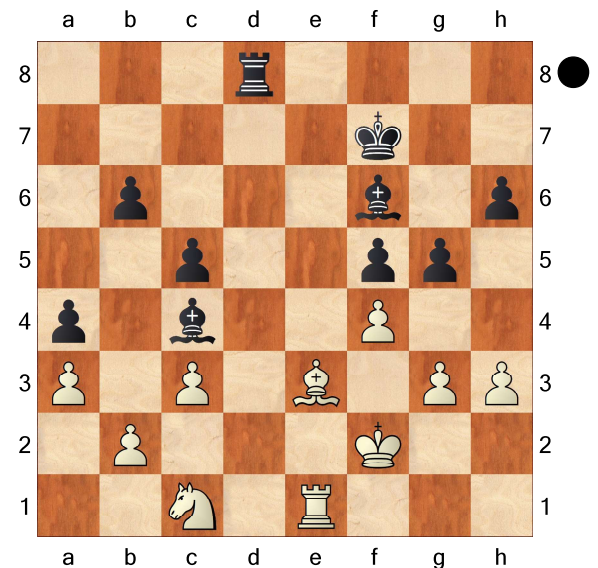
[31.g4 f4 32.Bf2 a5-+]

31...Bf6 32.g3

(Diagram)



a5! intending a4-a3. **33.Nc1 a4 34.a3 Bc4** restricting the Knight. **35.Kf2**



gxh4! There is no clear for Black to continue, so Black wants to transform his advantage of pair bishop to activity by trading White's dark squared Bishop. **36.Bxf4 Bg5 37.Bxg5**

[37.Ke3 This leads to some difficult calculation, where Black apparently wins. **Re8+ 38.Kf2 Rxe1 39.Kxe1 Bxf4 40.gxf4 Ke6 41.Ne2 Bxe2 42.Kxe2 Kd5 43.Kd3 b5 44.c4+ bxc4+ 45.Kc3 h5 46.h4 Ke4 47.Kxc4 Kxf4 48.b3 axb3 49.Kxb3 Kg3 50.a4 f4 51.a5 f3 52.a6 f2 53.a7 f1Q 54.a8Q Qf3+** winning the game.]

37...hxg5 38.Ke3 Kf6 Black has a lot

more activity because of White's passive Knight on c1. This lead to a win. **39.h4**

[39.Ne2 Rd3+ 40.Kf2 Rd2-+]
**39...gxf4 40.gxf4 Re8+ 41.Kf2 Rxe1
42.Kxe1 Ke5! 43.Ne2 Bxe2 44.Kxe2
Kf4 45.c4 Kg4 46.Ke3 f4+ 47.Ke4 f3
48.Ke3 Kg3 0-1 (25) Englisch,B-
Steinitz,W London 1883 HCL [GM
Ioannis Papaioannou]**